

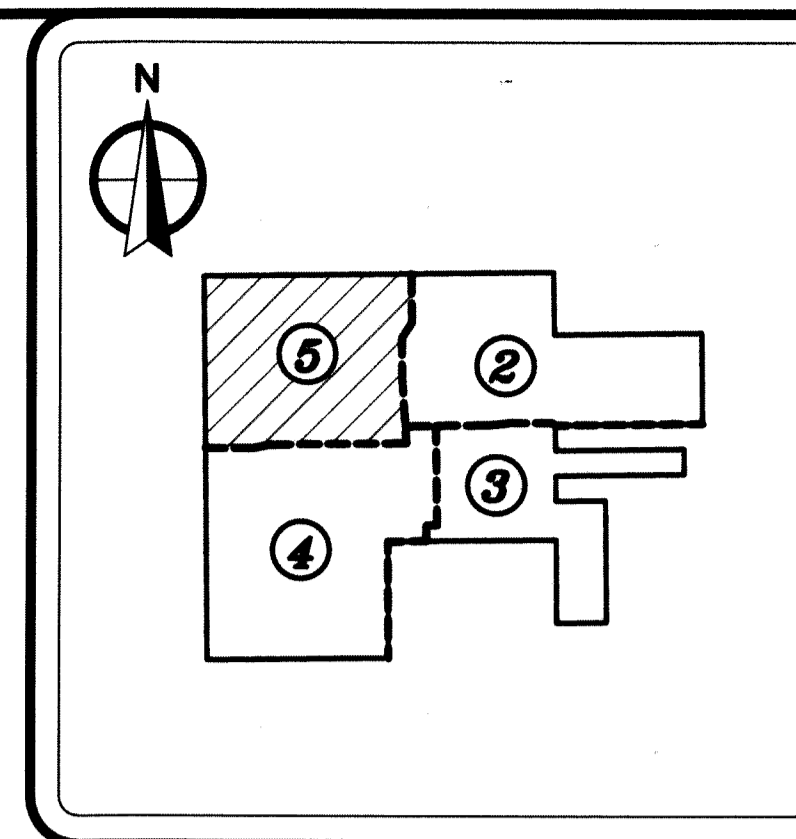


2035 Vista Parkway, West Palm Beach, FL 33411
 Phone No. 866.909.2220 www.wginc.com
 Cert No. 6091 - LB No. 7055

THIS INSTRUMENT WAS PREPARED BY ERIC MATTHEWS, P.S.M.
 PROFESSIONAL SURVEYOR AND MAPPER, LICENSE NO. 6717
 FOR THE FIRM: WANTMAN GROUP, INC.

RESERVE AT JUPITER

BEING A PARCEL OF LAND LYING WITHIN A PORTION OF THE NORTHEAST QUARTER (NE 1/4)
 OF THE SOUTHEAST QUARTER (SE 1/4) OF SECTION 33, TOWNSHIP 40 SOUTH, RANGE 42 EAST,
 PALM BEACH COUNTY, FLORIDA.

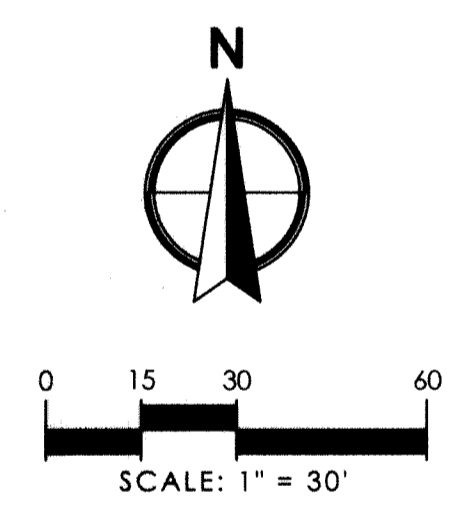
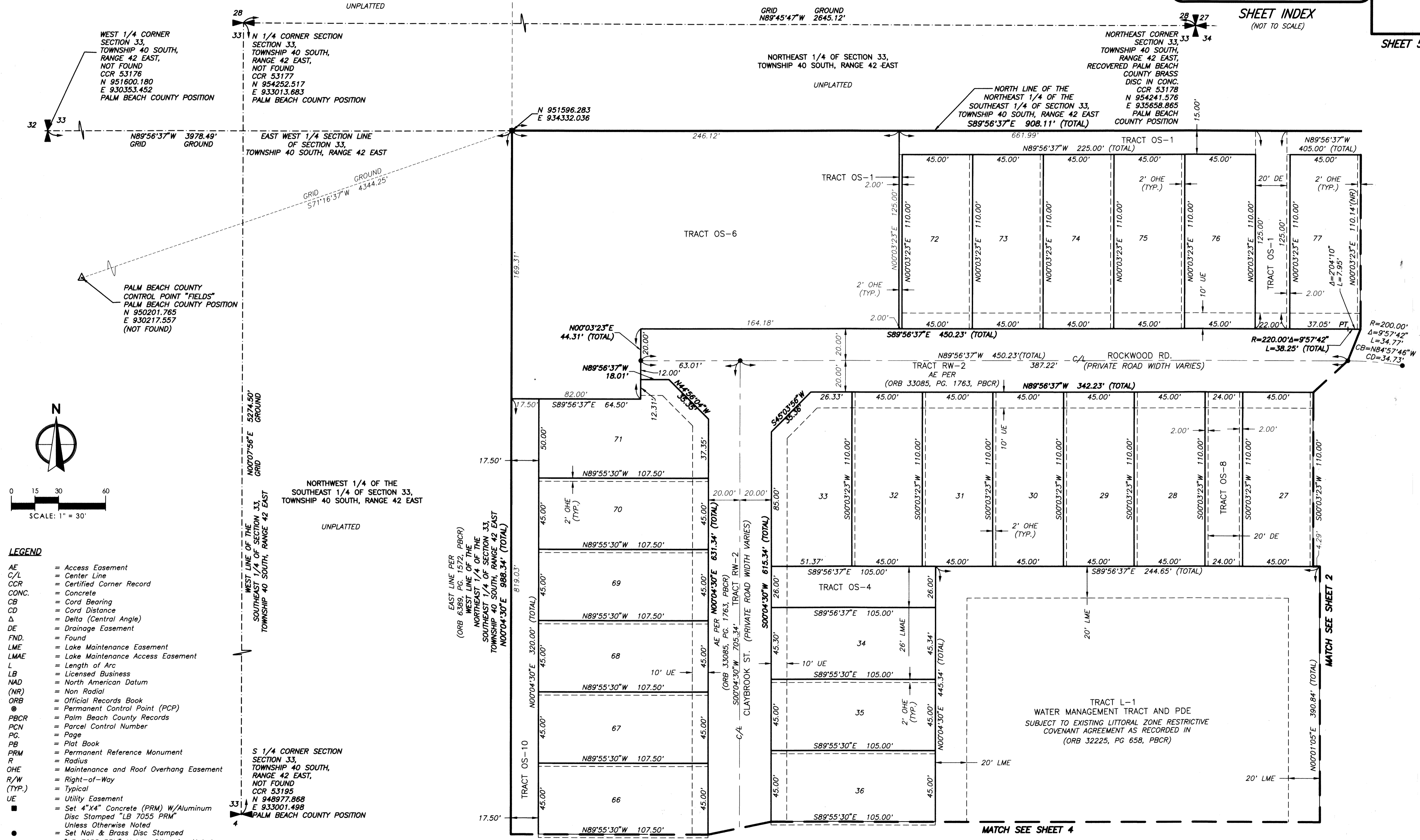


70

SHEET 5 OF 5 SHEETS

NOTE:

COORDINATES SHOWN ARE GRID COORDINATES
 DATUM - NAD 83 (1990 ADJUSTMENT)
 STATE PLANE FLORIDA EAST ZONE
 TRANSVERSE MERCATOR PROJECTION
 LINEAR UNIT = U.S. SURVEY FEET
 ALL DISTANCES ARE GROUND
 SCALE FACTOR = 1.000030300
 PLAT BEARING = GRID BEARING
 GROUND DISTANCE X SCALE FACTOR = GRID DISTANCE



LEGEND

- AE = Access Easement
- C/L = Center Line
- CCR = Certified Corner Record
- CONC. = Concrete
- CB = Cord Bearing
- CD = Cord Distance
- Δ = Delta (Central Angle)
- DE = Drainage Easement
- FND. = Found
- LME = Lake Maintenance Easement
- LMAE = Lake Maintenance Access Easement
- L = Length of Arc
- LB = Licensed Business
- NAD = North American Datum
- (NR) = Non Radial
- ORB = Official Records Book
- = Permanent Control Point (PCP)
- PBCR = Palm Beach County Records
- PCN = Parcel Control Number
- PG. = Page
- PB = Plat Book
- PRM = Permanent Reference Monument
- R = Radius
- OHE = Maintenance and Roof Overhang Easement
- R/W = Right-of-Way
- (TYP.) = Typical
- UE = Utility Easement
- = Set 4"x4" Concrete (PRM) W/Aluminum Disc Stamped "LB 7055 PRM" Unless Otherwise Noted
- = Set Nail & Brass Disc Stamped "LB 7055 PRM" Unless Otherwise Noted